

ST. MARY'S ACADEMY

CLASS 10 MATRIC

CLASS 10M

ENGLISH

ST. MARY'S ACADEMY

CLASS 10 MATRIC

Name: _____ Section: _____

Subject: English

WEEK:1

WORK SHEET 1 (DAY:1)

Hazrat Muhammad (P.B.U.H) an Embodiment of Justice

1. Read chapter # 1 and write down the meanings of the following phrases:

guilty of,

belong to,

exchange for,

in accordance with,

appeal to,

near and dear

2. Recall the text again and answer the following Questions:

1. How did the Prophet (P.B.U.H) resolve the issue?

2. Why did Quraish think that the Prophet (P.B.U.H) would favour them?

3. Why did non_Muslims trust the Prophet (P.B.U.H)?

4. What advice did the Holy Prophet(P.B.U.H) give to Hazrat Ali (R.A)?

CLASS 10 MATRIC

a. relative b. enemy c. friend

ST. MARY'S ACADEMY

CLASS 10 MATRIC

iv. firm

a. expensive

b. powerful

c. persistent

v. glorious

a. lustrous

b. splendid

c. fabulous

2. Choose the correct option.

1 .In paragraph 1 _____ details of the Holy Prophet S.A.W.W. are given.

a. general

b. specific

c. chronological

2. The key idea of the paragraph 2 is that _____ .

a. Holy Prophet (S.A.W) was a great orator

b. Holy Prophet (S.A.W) was a just head of the state

c. Holy Prophet (S.A.W) was just and fair even before his Prophethood

3. Examples given in paragraph 3 and 4 show that:

a. Holy Prophet (S.A.W) was a just head of the state

b. Holy Prophet(S.A.W) was a simple man

c. Holy Prophet (S.A.W) was fair in his dealings

ST. MARY'S ACADEMY

CLASS 10 MATRIC

WORK SHEET 4 (DAY:4)

1. Answers these questions. (Unit 1)

- i. How can people achieve perfection in moral, spiritual and social areas of life?
- ii. How did the Holy Prophet(S.A.W) set high and noble ideas for all mankind?
- iii. How were people of Makkah convinced of the Holy Prophet (S.A.W) 's justice even before his Prophethood?

2. Grammar

Write down the definition of Concrete Noun and Abstract Noun along 3 examples each.

3. Identify the underlined words as concrete or abstract noun.

- i. She puts in much effort into her studies as she wants to score good marks
- ii. Keep the balls in that basket.
- iii. He did not take good care of his pet.
- iv. The dishonest trader is losing the trust of his customers.
- v. They recommended him for his justice and trustfulness.

ST. MARY'S ACADEMY

CLASS 10 MATRIC

WORK SHEET 5 (DAY:5)

1. Answer these questions.

- i. What standards of justice did the Holy Prophet (S.A.W) practice as head of the state of Madina?
- ii. What made non muslims bring their suits to the Holy Prophet (S.A.W)?
- iii. How does the Quran describe the personality of the Holy Prophet (S.A.W)?

✚ Learn the following Punch Quotes.

"We have only sent you as a mercy to the worlds "(Surah Al-Anbiya, Verse 107)

The Quran: "God doth command you to render back your trusts to those to whom they are due; and when ye judge between man and man, that ye judge with justice." (9)

GRAMMAR

NOUN PHRASE

A Noun phrase is a group of words that works the work of a noun.

EX. As a young trader, he earned the good reputation of being an honest, fair and just business man.

2. Write down five sentences and identity the noun phrases as well.

3. Write down the definition of Past indefinite and Past continuous tenses along three examples each.

3. Fill in the blanks using past indefinite or past continuous tense.

- i. What _____ (you/do) when I _____ (call) you last night.
- ii. I _____ (sit) in the café when you _____ (called) me.
- iii. When you (arrive) at the bus station, who _____ (be) there?
- iv. Shamsa _____ (watch) a film when she _____ (hear) the noise.
- v. We _____ (play) tennis when Javeed _____ (hurt) his ankle.

ST. MARY'S ACADEMY

CLASS 10 MATRIC

WEEK: 2

WORK SHEET 6 (DAY:1)

Chinese New Year

1. Read unit 2 and write down meanings of the given words:

gatherings

customary,

thoroughly

commonplace

partake

traits

reinvigorate

2. Answer the following questions:

i. Why is Chinese New Year never on the same day each year?

ii. What is Chinese belief about cleaning houses before new year day?

iii. Why does this dinner consist of eight or nine dishes?

iv. Is Chinese belief about people having character traits of animals a fact or an opinion?

ST. MARY'S ACADEMY

CLASS 10 MATRIC

WORK SHEET 7 (DAY:2)

1. Answer the questions of EX.B given on page 20.
2. Read and learn the theme of unit 2 given on page 18.
3. Form a noun from the given words and use the nouns in sentences.

celebrate

gather

symbolic

prosper

decorate

encourage

 Learn the following Punch Quote:

"Let our New Year's resolution be this: we will be there for one another as fellow members of humanity, in the finest sense of the world."

WORK SHEET 8 (DAY:3)

1. Revise the definition of Collective Nouns and Modal verbs and do the exercise A given on page 21, Ex. B and C on P. 22.

2. Punctuation

Punctuate the paragraph given on page 22 Ex. D

ST. MARY'S ACADEMY

CLASS 10 MATRIC

WORK SHEET 9 (DAY:4)

1. Learn the following topics.

✚ Courtesy

✚ A Visit to a Hill Station

2. Write down a comprehensive essay on the topic given by adding two relevant quotations. (200-250 words)

✚ Importance of Dictionary

✚ Direct Indirect Speech

CHART : Change in Tenses and Modal verbs

Present Indefinite (Do / Does)	Past Indefinite (Did)
Present Continuous (is ,Am, Are)	Past Continuous (Was/were)
Present Perfect (Has, Have)	Past Perfect (Had)
Present Perfect Cont. (Has been, Have been)	Past Perfect Cont. (Had been)
Past Indefinite (Did)	Past Perfect (Had)
Past Continuous (Was/Were)	Past Perfect Cont. (Had been)
Past Perfect (Had)	No Change
Past Perfect Cont. (Had been)	No Change
Future Tense (Will)	Conditional (would)

MODAL VERBS

Shall should

Must Had to

May Might

Can Could

ST. MARY'S ACADEMY

CLASS 10 MATRIC

WORK SHEET 10 (DAY:5)

1. Learn the following topics:

✚ Health

✚ A True Muslim

2. Write down an essay on the topic "Street Crimes" with at least two relevant quotations. (200_250 words)

3. Use the following phrasal verbs in sentences.

Abide by

Ashamed of

Absent from

Assured of

Accused of

Aware of

Act upon

Begging for

Agree with

Believe in

Angry at

Belong to

Angry with

Arrive at

Appear before

ST. MARY'S ACADEMY

CLASS 10 MATRIC

CLASS 10M MATHS

ST. MARY'S ACADEMY

CLASS 10 MATRIC

Name: _____ Section: _____

Subject: Maths

1st WEEK

Ex. 1.1

Q2. Solve by factorization (Mid term break)

First write the question in the standard form

Standard form is $ax^2 + bx + c = 0$

2nd WEEK

Ex 1.2

Q1. Solve by using quadratic formula.

PART (i) TO (vi)

QUADRATIC FORMULA

$$X = \frac{-b \pm \sqrt{b^2 - 4ac}}{2a}$$

First write the question in the standard form

Standard form is $ax^2 + bx + c = 0$

ST. MARY'S ACADEMY

CLASS 10 MATRIC

CLASS 10M

URDU

ST. MARY'S ACADEMY

CLASS 10 MATRIC

Name: _____

Section: _____

Subject: Urdu

WEEK-1

(نصاب: سبق: مرزا محمد سعید۔ مصنف: شاہد احمد دہلوی)

Day one

سبق اور نظم کا بغور مطالعہ کرتے ہوئے درج ذیل سوالات کے تین سے چار سطروں پر مشتمل جوابات تحریر کیجیے۔

- ۱۔ مرزا محمد سعید کی معرکتہ الآرا کتاب کا نام اور مرتبہ تحریر کیجیے۔ ۲۔ مرزا محمد سعید کا سب سے بڑا مشغلہ کیا تھا؟
- ۳۔ مرزا محمد سعید کا حلیہ بیان کیجیے۔ ۴۔ خاک نگاری کی تعریف تحریر کیجیے۔
- ۵۔ تعلیم کے فروغ کے سلسلے میں سرسید کی خدمات کا ذکر اپنے الفاظ میں کیجیے (حوالہ صفحہ نمبر ۱۴)

”جس کا کام اسی کو ساجھے“ کہانی تحریر کیجیے (قواعد و انشا صفحہ 100)

Day 2

(قواعد و انشا صفحہ نمبر 79 پر مضمون نویسی سے متعلق معلومات کا مطالعہ کیجیے۔

Day 3

دیے گئے اشاروں کی مدد سے ڈھائی سو سے تین سو الفاظ پر مشتمل مضمون تحریر کیجیے۔

- عنوان: علامہ محمد اقبال اشارات ۱۔ بچپن ۲۔ ابتدائی تعلیم
- ۳۔ تصور پاکستان ۴۔ اقبال کی شاعری
- ۵۔ وفات

جملہ اسمیہ اور جملہ فعلیہ کی تعریف لکھیے۔ مبتداء اور خبر کے حوالے سے جملہ اسمیہ اور جملہ فعلیہ کی تقطیع کیجیے۔

Day 4

۱۔ علی بہادر ہے۔ ۲۔ سارہ لائق ہے۔ ۳۔ صہیب خوش ہے

۴۔ حمید نے خط لکھا۔ ۵۔ فریحہ نے خیرات دی۔ ۶۔ شعیب نے کھانا کھایا۔

سبق ”مرزا محمد سعید“ اور مصنف ”شاہد احمد دہلوی“ کے تعارف کا بغور مطالعہ کیجیے اور کم از کم 25 MCQ's تلاش کر کے تحریر کیجیے (سبق کی مشق میں دیے گئے MCQ's تحریر نہ کیجیے)

Day 5

ST. MARY'S ACADEMY

CLASS 10 MATRIC

WEEK-2

نوٹ: اردو کے کام کے لیے ممکن ہو تو answer sheet کا استعمال کیجیے۔ نیلا مارکر اور نیلا بال پوائنٹ یا پوائنٹر کا استعمال کیجیے۔
سٹے کے دونوں جانب حاشیہ لگائیے۔ خوشخطی کا خاص خیال رکھیے۔

(صفحہ نمبر 1 تا 6)

(نصاب: حمد۔ شاعر: حفیظ جالندھری)

شاعر کا تعارف اور نظم کا بغور مطالعہ کرتے ہوئے درج ذیل سوالات کے تین سے چار سطروں پر مشتمل جوابات تحریر کیجیے۔

Day one

- ۱۔ حفیظ جالندھری کے حالات زندگی تحریر کیجیے۔ ۲۔ حفیظ جالندھری کی اہم تصانیف لکھیے۔
- ۳۔ اللہ تعالیٰ نے یہ کائنات کون سا ایک لفظ کہہ کر بنائی ہے؟ ۴۔ اجالے اندھیرے اور خشک اور تر کس کے مظاہر ہیں؟
- ۵۔ حمد میں خالق کی کن مخلوقات کا ذکر کیا گیا ہے؟

(قواعد و انشا صفحہ 107)

خاکے کی مدد سے ’نیو نیوز‘ کہانی تحریر کیجیے

Day 2

صفحہ نمبر 3

سوال نمبر ۲۔ الفاظ سے مصرعے مکمل کیجیے۔

Day 3

صفحہ نمبر 4

سوال نمبر ۴۔ کالم ملائیے۔

صفحہ نمبر 4

سوال نمبر ۵۔ الفاظ کے متضاد لکھیے۔ (لغت سے تلاش کر کے)

صفحہ نمبر 4

سوال نمبر ۶۔ الفاظ کے معنی لکھیے۔ لغت سے تلاش کیجیے۔

صفحہ نمبر 4

سوال نمبر ۷۔ حمد کے مطابق الفاظ کو ترتیب دے کر مصرعے بنائیے۔

صفحہ نمبر 5

سوال نمبر ۹۔ حمد کے ہر شعر میں ہم آواز الفاظ موجود ہیں۔ ان کی نشاندہی کیجیے۔

صفحہ نمبر 5

سوال نمبر ۱۰۔ الفاظ پر اعراب لگائیے۔ لغت سے تلاش کیجیے۔

صفحہ نمبر 5

تعریف تحریر کیجیے۔ نظم۔ غزل۔

Day 4

صفحہ نمبر 6

نظم اور غزل کا فرق (دو کالم بنا کر موازنہ لکھیے)

شاعر کا تعارف اور نظم کا بغور مطالعہ کرتے ہوئے کم از کم 20 MCQ's تلاش کر کے تحریر کیجیے

Day 5

(سبق کی مشق میں دیے گئے MCQ's تحریر نہ کیجیے)

ST. MARY'S ACADEMY

CLASS 10 MATRIC

CLASS 10M

PAKISTAN

STUDIES

ST. MARY'S ACADEMY

CLASS 10 MATRIC

Name: _____ *Section:* _____

Subject: Pakistan Studies

WORKSHEET WEEK I

Note: Read Chap # 5, learn and rewrite the following short questions

CHAPTER 5

HISTORY OF PAKISTAN II

SHORT QUESTIONS

1. Write two duties of the Union council.

The duties of a Union council include:

- To provide security within its boundary
- Making the annual development program
- Imposing taxes at local level
- Solving the criminal, civil and family disputes

2. Why was the Washington Declaration made?

There was a clash between Pakistan and India in Cargill in May 1999. On the advice of American President, Bill Clinton, the PM Pakistan Nawaz Sharif visited America and signed a ceasefire communiqué. It was known Washington Declaration.

3. Why did the President Ghulam Ishaq Khan dismiss the Benazir Bhutto government?

President Ghulam Ishaq Khan using the powers under section 58-2-B of the 1973 Constitution dismissed the government Benazir Bhutto on 6th August 1990 on the charge of corruption.

ST. MARY'S ACADEMY

CLASS 10 MATRIC

4. Write two measures taken for women in the Musharraf government.

For the first time, in history of Pakistan Pervez Musharraf govt took measures for women:

- Shamshad Akhtar, the first female become the Governor of State bank Of Pakistan
- Women were appointed as fighter pilots in PAF
- They were given small loans without guarantee
- To contest on general seats despite having reserved seats

5. Under which law did America discontinue the supply of defense armament to Pakistan?

Under PRESSLER LAW America discontinue the supply of defense armament to Pakistan.

6. What is meant by Lahore declaration?

The India PM Atal Bihari Vajpayee visited Lahore by bus with a message of good will. The PM Pakistan gave him a warmed welcomed at Wagha Border. A joint communiqué was signed which was known as “Lahore Declaration”.

7. Why the 1973 constitution is called the federal constitution?

Like the previous constitutions Pakistan has been declared as federal state under the 1973 constitution. The federation of Pakistan consists of four provinces, Federal capital and FATA (Federally Administered tribal areas).

8. What was the limit of the agricultural land which PM Zulfikar Ali Bhutto fixed for the individual holding?

PM Zulfikar Ali Bhutto fixed the following limits of agricultural land for the individual holding:

- 150 acres land irrigated by canals

ST. MARY'S ACADEMY

CLASS 10 MATRIC

- 300 acres land irrigated by natural rain

9. Under which amounts were the HBL and UBL privatized?

HBL and UBL were sold in December 2004 for Rupees:

- Habib Bank was sold for Rs. 22 billion only
- United Bank was sold for Rs. 13 billion only

10. In which election was graduation made conditional for the candidates?

Election was held in October 2002. General Pervez Musharraf took the oath of the President for the next five years.

For the same time it was made mandatory for a candidate to be a graduate.

ST. MARY'S ACADEMY

CLASS 10 MATRIC

WORKSHEET WEEK II

Note: Read Chap # 6, learn and rewrite the following short questions

CHAPTER 6

FOREIGN RELATIONS OF PAKISTAN

SHORT QUESTIONS

1. Describe the location of Pakistan.

Pakistan is located in the south of Asia. It covers an area of 796,096 square kilometers. Pakistan became an independent state in 1947. Pakistan shares land borders with 4 countries:

- [Iran](#) lies in the south west of Pakistan. The length of Pak-Iran border is 800 km long.
- [India](#) is in the east of Pakistan and share a border of 1600km.
- [China](#) is in the north of Pakistan. Pakistan shares 592km log border with China.
- [Afghanistan](#): there is Afghanistan in the North West of Pakistan. Pak-Afghan border is called Durand line and it is 2250 km long.
- Arabian Sea is located in the south of Pakistan.

Quick facts

Population	190,291,129 (2014)
Density	246.9 / km ² (639.3 / mi ²)
Languages	English, Urdu

ST. MARY'S ACADEMY

CLASS 10 MATRIC

Independence Year	1947
Capital	Islamabad (Islamabad)
Currency	Pakistan Rupee
GDP per Capita	1,298 (2014 data)
Land Area	770,875 km ² (297,636 mi ²)
Water Area	25,220 km ² (9,737 mi ²)
Neighbouring Countries	Iran , India , China , Afghanistan
Longitude	60.880- 77.840
Latitude	23.690- 37.090

2. What is meant by Durand Line?

- A boarder line between Pakistan and Afghanistan
- It was demarcated by Sir Hennery Durand in 1893
- It is 2250 km long

3. What are the responsibilities of the Economic and Social Council?

The responsibilities of the Economic and Social Council are:

- Raising the standard of living of people
- Trying for social and economic development
- Collaboration in the educational, scientific, and cultural fields
- Taking measures to eradicate unemployment, poverty, and diseases

ST. MARY'S ACADEMY

CLASS 10 MATRIC

4. Write three responsibilities of UN General Assembly.

The responsibilities of UN General Assembly are as under:

- Electing the non-permanent members of the Security Council
- Giving membership to new states
- Terminating the members of some states
- Approving the budget of the UN
- Taking measure to establish world peace

5. When was the boarder settlement made between Iran and Pakistan?

The boundary with Iran, was first demarcated by a British commission in 1893 (the same year as the Durand Line was demarcated), separating Iran from British India's Baluchistan province. Modern Iran has a province named Sistan via Baluchistan that borders Pakistan. In 1957 Pakistan signed a frontier agreement with Iran in Rawalpindi according to which the border was officially declared and the two countries haven't had this border as a subject of serious dispute at all.

6. By which two countries the Indus Water Treaty signed?

- The Indus Waters Treaty was signed in September, 1960 after nine years of negotiations between India and Pakistan with the help of the World Bank, which is also a signatory.
- It has seen as one of the most successful international treaties.
- According to this treaty three eastern rivers (Sutlej, Beas and Ravi) came under the possession of India whereas Pakistan got the exclusive control of three western rivers i.e. Chenab, Jhelum and Indus.

7. When did the relation between Pakistan and Peoples Republic of China begin?

When China was declared a Republic in 1949, Pakistan immediately recognized it.

ST. MARY'S ACADEMY

CLASS 10 MATRIC

Pak- China friendly relations started in 1954-55.

China has always proved itself to be a dependable friend in war and peace.

8. Write the names of ten members of the organization of the OIC.

The ten member states of the organization of the OIC are:

- UAE
- Pakistan
- Iran
- Turkey
- Afghanistan
- Jordan
- Iraq
- Indonesia
- Saudi Arabia
- Sudan

9. When was the Kashmir issue presented in UN?

Pakistan attacked Kashmir in October 1947 and the war began immediately.

After a couple of months fighting in the brutally cold mountains, Nehru finally called up the UN in January 1948. He had a fairly strong case there. The UN then took 8 months and then brought a resolution in August 1948.

10. When and where did the world trade center tragedy take place?

The world trade center tragedy took place on 15 years ago on 11 September, 2001 in New York (USA). In this tragedy about 3000 people were dead and the injuries were more than 6000.

11. Write the introduction of Bhutan in three lines.

Bhutan is a mountainous country. Most of its people live in valleys. Its capital is Thimphu, which is situated on the bank of River Thimphu. Its official language is Dzongkhag. Bhutan is also a member country of SAARC.

12. What is meant by foreign policy?

ST. MARY'S ACADEMY

CLASS 10 MATRIC

By foreign policy we mean:

“The policy of a sovereign state in its interaction with other sovereign states.”

- Foreign policy states how a country will act with respect to other countries politically, socially, economically, and militarily.
- Foreign policy can also be known as [international relations](#) policy or simply diplomacy. Foreign policy is handled by foreign ministers and ambassadors.

13. **Write any four points of Pakistan's foreign policy.**

- Important points of Pakistan's foreign policy are asunder:
- security of its border
- Freedom and sovereignty
- To protect the ideological of Pakistan
- To develop relations with Islamic states

14. **Write the names of SAARC countries.**

The member countries of SAARC are:

- | | | |
|---------------|--------------|----------------|
| a. Pakistan | d. Sri Lanka | g. Bhutan |
| b. India | e. Nepal | h. Afghanistan |
| c. Bangladesh | f. Maldives | |

15. **What is SAARC? Who gave its idea and when was its established?**

- “SAARC” (South Asian Association for Cooperation) is an organization for regional **cooperation of the South Asian Countries**.
- The idea for its formation was presented by the Ex. Prime Minister of Bangladesh, Mr. **Zia-Ur Rahman in 1980**.
- This organization was established in **1985**.

16. **Write the objectives of SAARC.**

Following are the objectives of SAARC:

- To strength self-reliance between the South Asian Countries

ST. MARY'S ACADEMY

CLASS 10 MATRIC

- To encourage active collaboration among the member countries in economic

17. What is Geneva Pact?

In 1998, to resolve the Afghan issue, an agreement was signed which was named the Geneva Pact. In addition to Pakistan and Afghanistan, America and Russia also signed it. According to this Pact, Russia decided to withdraw its forces within nine months.

18. What were the objectives of UN?

The objectives of UN are:

- Establishing international peace
- Economic and social cooperation
- Provision of justice
- Resolving human problems

19. Name the organs of UN organization.

The organs of UN organization are:

- General assembly
- Security Council
- Trusteeship Council
- Economic and Social Council
- International Court of Justice
- Secretariat

20. What is mean by Veto power?

The decisions of Security Council are made after the consent of at least 9 members out of 15, but it is necessary that these 9 members should include 5 permanent members. If a permanent gives a negative opinion, then the decision cannot be made.

ST. MARY'S ACADEMY

CLASS 10 MATRIC

CLASS 10M

ISLAMIIYAT

ST. MARY'S ACADEMY

CLASS 10 MATRIC

Name: _____ Section: _____

Subject: Islamiyat

معروضی سوالات (ہر سوال کے دیئے ہوئے چار ممکنہ جوابات میں سے درست پر () کا نشان لگائیں)۔

- 1- اے نبی ﷺ ڈرتے رہیے۔
(ا) اللہ تعالیٰ سے (ب) کافروں سے (ج) منافقین سے (د) امراء سے
- 2- اللہ تعالیٰ نے کسی آدمی کے دل نہیں بنائے۔
(ا) دو (ب) تین (ج) چار (د) پانچ
- 3- بیشاق والی آیت میں سب سے پہلے نبی کا ذکر ہے۔
(ا) حضرت محمد ﷺ (ب) حضرت نوح (ج) حضرت ابراہیم (د) حضرت موسیٰ
- 4- اللہ تعالیٰ نے ان پر بھیجی۔
(ا) ہوا (ب) بجلی (ج) لعنت (د) روشنی
- 5- کہنے لگے ہمارے پیچھے کھلے پڑے ہیں۔
(ا) محلے (ب) قبیلے (ج) گھر (د) باغ
- 6- طہارت کے لغوی معنی ہیں۔
(ا) پاک ہونا (ب) وضو کرنا (ج) غسل کرنا (د) خوشبو لگانا
- 7- اگر جسم اور لباس پاک ہو تو نماز سے پہلے وضو کرنا
(ا) سنت ہے (ب) مستحب ہے (ج) واجب ہے (د) مکروہ ہے
- 8- یہ تمہارے بارے میں کرتے ہیں۔
(ا) بخل (ب) گستاخانہ باتیں (ج) اچھی باتیں (د) غصہ
- 9- جیسے کسی کو غشی آرہی ہو۔
(ا) موت سے (ب) کمزوری سے (ج) ڈر سے (د) خوف سے
- 10- اگر جسم پاک نہ ہو تو وضو کے ساتھ ضروری ہے۔
(ا) خوشبو لگانا (ب) عبادت کرنا (ج) غسل کرنا (د) تنہیم کرنا

ST. MARY'S ACADEMY

CLASS 10 MATRIC

درج ذیل سوالات کے مختصر جوابات تحریر کریں۔

- 1- ظہار کسے کہتے ہیں۔
 - 2- متبنی کسے کہتے ہیں۔
 - 3- انبیاء کرام سے پختہ عہد کیوں لیا گیا؟
 - 4- آیت ميثاق میں نبی کریم ﷺ کا ذکر سب سے پہلے کیوں کیا گیا ہے؟
 - 5- کفار کے لشکر اور یہود نے کیا چال چلی؟
 - 6- خوف اور دہشت سے مسلمانوں کا کیا حال تھا؟
 - 7- مومنین کی آزمائش کس طرح کی گئی۔
 - 8- منافقین کس طرح مسلمانوں کا کیا حال تھا؟
 - 9- جہاد میں رکاوٹ ڈالنے والے کون لوگ تھے؟
 - 10- منافقین کی بخیلی کیا تھی؟
- احادیث نمبر 11, 12, 13 میٹ کا پیوں پر تحریر کریں۔ تفصیلی جوابات تحریر کریں۔
- 1- قرآن وحدیث کی روشنی میں طہارت پر ایک مختصر نوٹ لکھیے۔
 - 2- وضو کا طریقہ بیان کیجئے۔
 - 3- غسل کرنے کا مسنون طریقہ کیا ہے؟
- نوٹ:- یہ تمام کام سکول کی میٹ کا پی پر تحریر کریں۔

ST. MARY'S ACADEMY

CLASS 10 MATRIC

CLASS 10M

ETHICS

ST. MARY'S ACADEMY

CLASS 10 MATRIC

Name: _____

Section: _____

Subject: Ethics

Worksheet No: 1-

Circle the correct option i.e. A/B/C/D. Each part carries one mark.

(i) Man has _____ needs along with physical needs

A. Psychological

B. Moral

C. Emotional

D. Intellectual

(ii) _____ decides, what is right and wrong?

A. Individual

B. Society

C. Conscience

D. Brain

(iii) Religious teachings are based on fear of _____

A. God

B. Law

C. State

D. Society

(iv) Religions of the world are of _____ kinds.

A. Two

B. Three

C. Four

D. Five

(v) _____ did not comment about God

A. Buddha

B. Jesus

C. Aristotle

(vi) According to Hinduism the world is.

A. Examination Hall

B. Home of pain

C. Prison

D. Place for preparation of coming life

ST. MARY'S ACADEMY

CLASS 10 MATRIC

(vii) A letter which does not belong to you should be.

- | | | | |
|----|--|----|------------------------|
| A. | Forwarded to relevant branch after reading | B. | Don't read |
| C. | Remain on the table | D. | Sent back to applicant |

(viii) In the last years of his age Imam Ghazali was hermit in

- | | | | |
|----|----------|----|---------|
| A. | Damascus | B. | Makkah |
| C. | Taus | D. | Baghdad |

(ix) Economy is based on.

- | | | | |
|----|--------------|----|-----------------|
| A. | Capitalism | B. | Human character |
| C. | Hard Working | D. | Intelligence |

(x) Nightingale participated with her ____ fellow nurses in the war of Karemiya.

- | | | | |
|----|----|----|----|
| A. | 18 | B. | 28 |
| C. | 38 | D. | 48 |

ST. MARY'S ACADEMY

CLASS 10 MATRIC

Answer the following questions in 3 to 4 lines

(i) What is the role of religion in character building?

(ii) What is the basic right of every human being?

(iii) What is the concept of Avagun ?

(iv) What is the central idea of Jainism?

(v) Name any 3 Hindu gods?

(vi) What is Vedanta?

ST. MARY'S ACADEMY

CLASS 10 MATRIC

(vii) When and where Ghazali was born?

(viii) Why Florence did not get Marry?

(ix) Why the etiquettes are important?

(x) Who was father and grandfather of Imam Ghazali?

(xi) What did the leader of robbers ask from Ghazali?

(xii) What are important topics in the books of Ghazali?

Answer these questions in detail.

1- Explain the services of Florence Nightingale related to nursing.

2- How the believers of Buddhism worship?.

3- Write a note on the Existence and Greatness of God.

4- Worship places of all religions are equally respectable. Explain your answer.

ST. MARY'S ACADEMY

CLASS 10 MATRIC

CLASS 10M

CHEMISTRY

ST. MARY'S ACADEMY

CLASS 10 MATRIC

Name: _____ Section: _____

Subject: Chemistry

Week - 1

CHEMICAL EQUILIBRIUM

9.1. REVERSIBLE REACTIONS AND DYNAMIC EQUILIBRIUM

Q.1. Answer the following questions? (Day-1)

1. What are irreversible (complete) reactions?
2. Give a few characteristics of irreversible reactions?
3. Define Reversible reaction and give examples?
4. What is the importance of equilibrium reaction in the chemical industry?
5. How is equilibrium established between liquid and vapours in a closed container?
6. Differentiate between forward and reverse reactions.
7. What happens when SO_2 and O_2 gases are mixed in a sealed container?
8. Define Chemical Equilibrium?
9. Why chemical Equilibrium is a dynamic equilibrium?

Q.2. Prepare 10 MCQ's from the above mentioned topic? (Day-2)

9.2. LAW OF MASS ACTION AND DERIVATION OF THE EXPRESSION FOR THE EQUILIBRIUM CONSTANT.

Q.1. Answer the following questions? (Day-3)

1. Who presented the law of mass action?
2. Define law of mass action?
3. What is active mass?
4. Define equilibrium constant?
5. State conditions for equilibrium?
6. Describe the ways to recognize equilibrium?

Q.2. Prepare 10 MCQ's from the above mentioned topic? (Day-4)

9.3. Equilibrium Constant and its units

No question

ST. MARY'S ACADEMY

CLASS 10 MATRIC

9.4. Importance of Equilibrium Constant

Q.1. Answer the following questions? (Day-5)

1. State uses of equilibrium constant?
2. How can the equilibrium concentration of equilibrium mixture be determined with the help of equilibrium constant?
3. How can direction of chemical reaction be predicted with the help of equilibrium constant?
4. Explain the formation of fizzy drinks.

Q.2. Prepare 10 MCQ's from the above mentioned topic? (Day-6)

ST. MARY'S ACADEMY

CLASS 10 MATRIC

Week - 2

ACIDS BASES AND SALTS

10.1. CONCEPTS OF ACIDS AND BASES

Q.1. Answer the following questions? (Day-1)

1. Name the types in which compounds can be classified?
2. What does the word 'acid' mean?
3. Highlight some characteristic properties of acids and bases?
4. Write down some characteristic properties of acids and bases?
5. Write the uses of some common acids?
6. Write the uses of some common bases?
7. What are amphoteric substances? Explain with example
8. Classify water as proton donor or proton acceptor?

Q.2. Prepare 10 MCQ's from the above mentioned topic? (Day-2)

10.2. SELF-IONIZATION OF WATER – The pH SCALE

Q.1. Answer the following questions? (Day-3)

1. Define self-ionization of water?
2. Write an Explanatory note on pH scale?
3. Define pH?
4. What do you mean by pH scale?
5. Briefly explain the measurement of pH?
6. Write the use of pH paper or universal indicator.
7. Write the use of litmus paper.
8. Write the use of acid base indicator?
9. At what pH phenolphthalein changes its colour?
10. At what pH bromothymol blue changes colour from yellow to blue?
11. Write names of three acid – base indicators.
12. What is the colour of methyl red in solution of:
 - a. $\text{pH} = 4$
 - b. $\text{pH} = 9$
13. Enlist pH ranges of some common indicators?

Q.2. Prepare 10 MCQ's from the above mentioned topic? (Day-4)

ST. MARY'S ACADEMY

CLASS 10 MATRIC

10.3. Salts

Q.1. Answer the following questions? (Day-5)

1. What do you know about salts?
2. Briefly explain neutralization?
3. List the Examples of basic salts?
4. List the Examples of normal salts?
5. Which is a salt HCl or NaCl?
6. Which acid forms NaNO_3 ?
7. Which acid forms CaSO_4 ?
8. Write the names of some Common acids and their salts?
9. Explain with some examples how some acids form more than one salt?
10. Which salt is acid salt, NaHCO_3 or Na_2CO_3 ?
11. Which salt is normal salt, NaCl, NaHCO_3 or Na_2CO_3 ?
12. How phosphoric acid forms three series of salt?

Q.2. Prepare 10 MCQ's from the above mentioned topic? (Day-6)

ST. MARY'S ACADEMY

CLASS 10 MATRIC

CLASS 10M

BIOLOGY

ST. MARY'S ACADEMY

CLASS 10 MATRIC

Name: _____ Section: _____

Subject: *Biology*

INSTRUCTIONS:

- READ THE TOPIC /PAGES MENTIONED THOROUGHLY
- READ THE SIDE BOX
- CONCENTRATE THE TERMINOLOGY GIVEN BOLD IN THE TEXT
- OBSERVE THE FIGURE/DIAGRAM RELATED TO THE TOPIC
- FOR EACH WORK SHEET TIME LIMIT IS 40 MINUTE

ST. MARY'S ACADEMY

CLASS 10 MATRIC

BIOLOGYB-X Work Sheet-1 (chapter # 10 page#2, 3)

Instructions: read the page # 2 and 3 and then try to answer the following.

Multiple choice questions:

- i) -----type of reactions are responsible for energy production in cells.
a) Hydrolysis b) reduction c) oxidation d) b & c.
- ii) The aquatic plants get the oxygen form -----
a) O_2 of H_2O b) O_2 of dissolve in H_2O c) O_2 of air d) all
- iii) Breathing is -----process.
a) Mechanical b) biochemical c) a&b d) none of these
- iv) Gaseous exchange in plants occur through -----.
a) Stomata b) lenticels c) cuticle of young plant d) all
- v) Gaseous exchange occur at -----level.
a) One b) two c) three d) four

Short answer:

i) Differentiate between

- a) Stomata-----
-----&-----
lenticels-----

b) breathing-----
-----&-----
cellular respiration-----

ii) Explain the term cellular respiration-----

iii) Describe the fate of oxygen and carbon dioxide during cellular respiration.

iv) Describe Gaseous exchange in a)woody stem & mature root-----

b) aquatic plants-----

v) Describe the behavior of stomata:--a) during day time-----

b)night time -----

ST. MARY'S ACADEMY

CLASS 10 MATRIC

BIOLOGY-X Work Sheet-2 (chapter # 10 page#4,5,6)

Instructions: read the page # 4, 5 and 6 also observe the diagram and then try to answer the following.

Multiple choice questions:

- i) Pulmonary vein contain -----blood.
 - a) Oxygenated b) deoxygenated c) both d) none of these
- ii) The breathing movement are -----
 - a) Exclusively voluntary b) involuntary c) voluntary and involuntary d) exclusively voluntary
- iii) The flap that guard the glottis (opening of larynx) is called -----
 - a) Pharynx b) epiglottis c) trachea d) none of these
- iv) The bronchi are present at -----
 - a) Above chest cavity b) below chest cavity c) in the chest cavity
- v) Trachea and bronchi lined with -----
 - a) Ciliated cells b) glandular cells c) ciliated and glandular cells

Short answer:

i) **How trachea/respiratory passage filter or clean the inhaled air?**-----

ii) **How wind pipe / trachea adapted to filter the inhaled air?**-----

iii) **Write a note on voice box.**-----

iv) **Define :** a) bronchiole-----

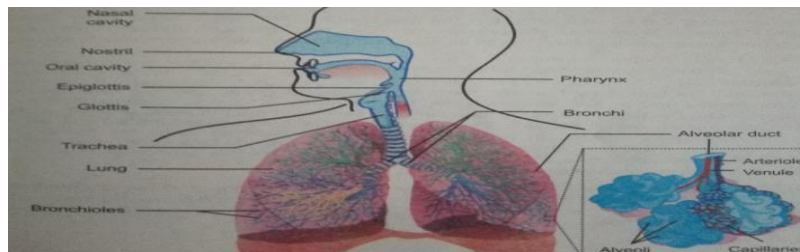
b) Diaphragm-----

b) alveoli-----

v) **Describe the structure of lungs.**-----

ST. MARY'S ACADEMY

CLASS 10 MATRIC

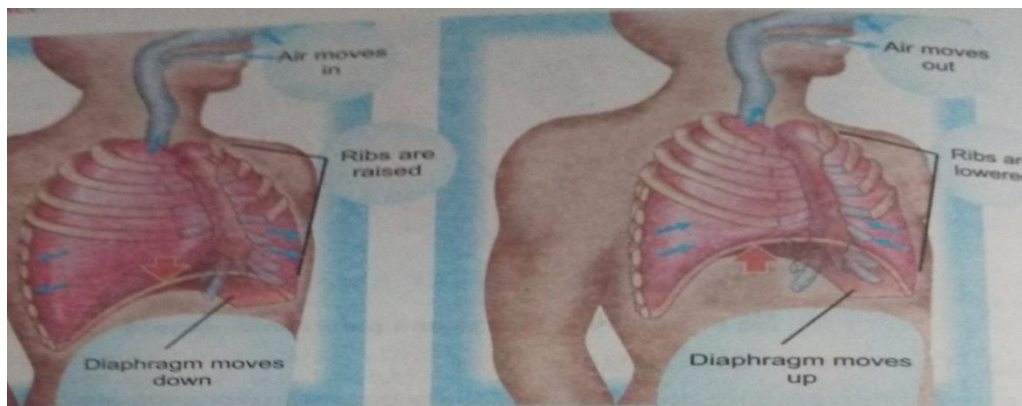


BIOLOGY-X Work Sheet-3 (chapter # 10 page# 7, 8)

Instructions: read the page # 7, 8, observe the diagram and then answer the following.

Multiple choice questions:

- i) The partial pressure of oxygen is -----in blood as compared to environment.
a) High b) low c) equal d) very high
- ii) The concentration of -----stimulate the respiratory center in brain (medulla) .
a) Oxygen b) carbon dioxide c) carbon monoxide d) a & b.
- iii) Human breathe ----- times per minute in normal/resting conditions.
a) 10-15 b) 15-20 c) 20-25 d) 25-30
- iv) During inspiration -----muscles below rib cage contract.
a) Intercostal b) diaphragm c) smooth muscle d) b& c.
- v) The breathing movements are -----to large extent.
a) Voluntary b) involuntary c) controlled d) none of these



Short answers:

i) Define :a) inhalation -----

b) Exhalation-----

ii) Describe the changes take place during breathing ,as shown in figure above .-----

ST. MARY'S ACADEMY

CLASS 10 MATRIC

III) What percentage of oxygen, nitrogen and water vapours present in inhaled and exhaled air -----

iv) How inhalation differ from exhalation?-----

BIOLOGY-X Work Sheet-4 (chapter # 10 page#11,12, 13)

Instructions: read the page #11, 12 and 13 and then try to answer the following.

Multiple choice questions:

i) -----can cause bronchitis.

a) Virus b) bacteria c) tar d) all

ii) Mild wheezing, fever, chills, and short of breath are symptoms of -----

a) Lung Cancer b) emphysema c) asthma d) bronchitis

iii) Bronchodilators are usually used in-----

a) Lung Cancer b) emphysema c) asthma d) all of these

iv) The surface area of lungs reduced greatly in-----

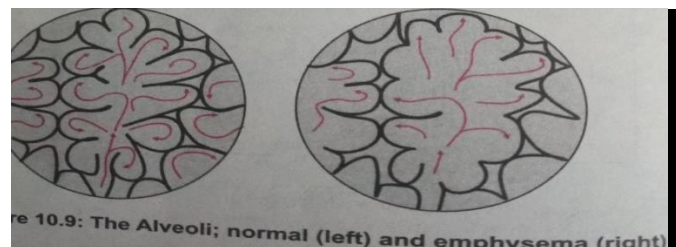
a) Pneumonia b) emphysema c) lung cancer d) asthma

v) -----are symptoms of pneumonia.

a) High fever b) shivering c) sputum production d) all

Short answers:

I) Figure below shows the comparison between normal and emphysematic alveoli. Describe how emphysematic alveoli affect the individual's life processes.



ST. MARY'S ACADEMY

CLASS 10 MATRIC

ii) write a note on asthma.-----

iii) Give causes and symptoms of pneumonia.-----

iv) define: bronchitis -----&

Chronic bronchitis-----
-----.

BIOLOGY-X Work Sheet-5(chapter # 10 page#14, 15)

Instructions: read the page # 14, 15 and then try to answer the following.

Multiple choice questions:

- i) World NO Tobacco Day observed on -----
a) 21 may b) 31 may c) 25 may d) 11 may.
- ii) Passive smoking can increase the risk of heart disease by-----
a) 20-30% b) 25-30% c) 30 -35% d) 35-40%
- iii) Smoking lead to cancer in -----
a) Lungs b) kidney c) mouth d) all
- iv) The presence of carbon monoxide in blood -----
a) Enhance/increase R.B.C b) Enhance/increase W.B.C c) decrease oxygen carrying capacity

Short answers:

- i) Differentiate : passive smoker-----&
active smoker-----

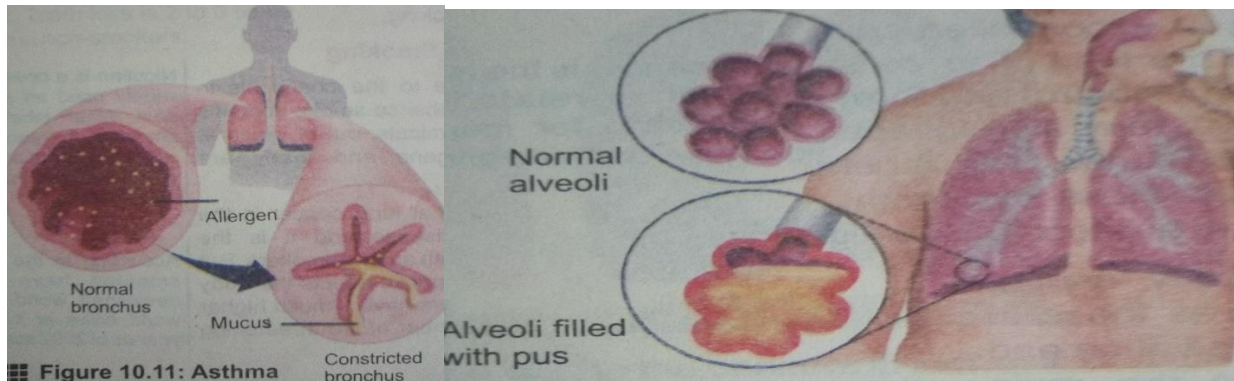
- ii) Give causes and symptoms of lung cancer-----

- iii) Describe bad effects of smoking on human health and his social life.-----

- iv) Give symptoms ,causes of the following respiratory disorder shown in figure 10.11 & 10.10 below:

ST. MARY'S ACADEMY

CLASS 10 MATRIC



.....

.....

.....

.....

.....

.....

BIOLOGY-X Work Sheet-1 (chapter # 11 page#18-21)

Instructions: read the page # 18-21 and then try to answer the following.

Multiple choice questions:

- i) The maintenance of internal conditions of the body at equilibrium, is -----
a) Thermoregulation b) osmoregulation c) homeostasis
- ii) If thermoregulation lost in living organism it can cause -----
a) Sweating b) vomiting c) loss of enzyme action d) death
- iii) Carbon dioxide remove from -----
a) Stomata b) young stem c) root hair d) all
- iv) Carnivorous plants secrete-----
a) Resin b) gum c) latex d) mucilage
- v) Juicy fluid present in -----
a) Hydrophytes b) mesophytes c) xerophytes d) halophytes

Short answers:

- i) Differentiate : guttation-----&
Transpiration-----.
- ii) Describe three process/ways of homeostasis?-----

- iii) How homeostasis important to living organism.-----

ST. MARY'S ACADEMY

CLASS 10 MATRIC

- Also
name some metabolic waste /excretory products in plants -----

- iv) Define and describe adaptations of: xerophytes-----

-----and
halophytes -----

- v) How hydrophytes differ from halophytes-----

BIOLOGY-X Work Sheet-2 (chapter # 11 page#21-25)

Instructions: Read the page #21-25 and then try to answer the following.

Multiple choice questions:

- i) -----wastes are also removed by sweating.
a) Urea b) uric acid c) water d) all
- ii) Urine store temporarily in -----
a) Ureter b) urethra c) urinary bladder d) kidney
- iii) Nerves enter the kidney through-----
a) Renal cortex b) renal medulla c) hilus d) renal pelvis
- iv) -----form the base of the ureter.
a) Renal pyramid b) nephron c) renal pelvis d) urinary bladder
- v) the capillary of the glomerulus arise from-----
a) Afferent arteriole b) efferent arteriole c) renal artery d) renal vein.

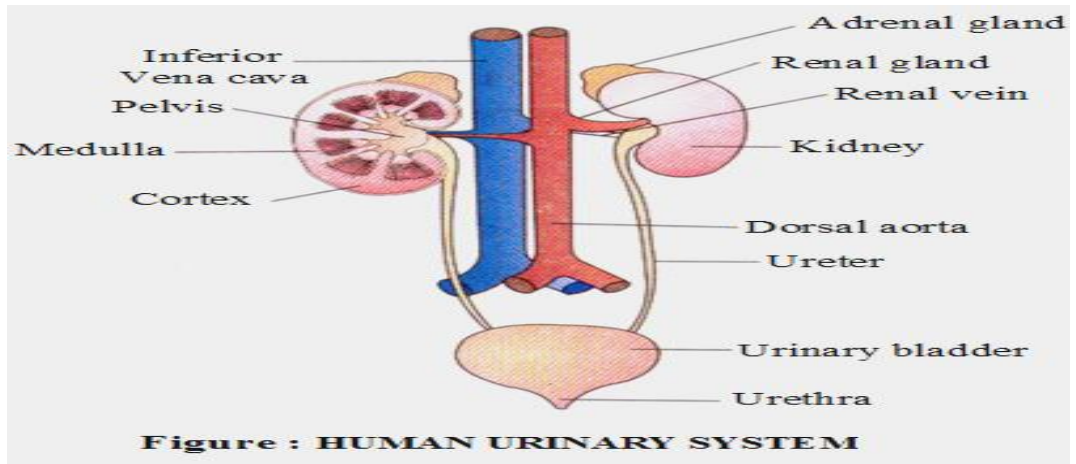
Short answers:

- i) Name and give function of the main organs which work for homeostasis-----

- ii) Trace and describe the urinary system of human. -----

ST. MARY'S ACADEMY

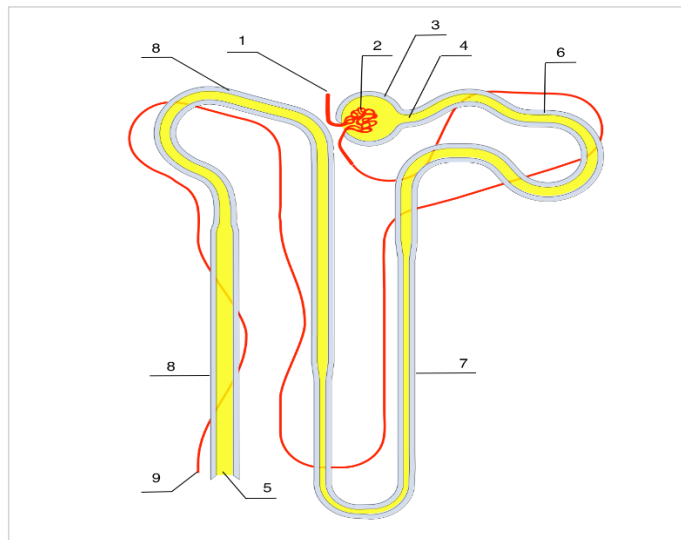
CLASS 10 MATRIC



iii) Describe the morphology and internal structure(anatomy) of human kidney-----

iv) Describe the function of kidney or how kidney filter the blood(urine formation).-----

v) Define and describe the structure of nephron .Also label the figure shown below:

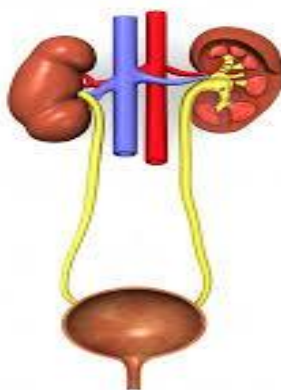


ST. MARY'S ACADEMY

CLASS 10 MATRIC

vi) Define osmoregulation .Also describe how kidney play role in osmoregulation.-----

vii) Label the different parts/structure of human urinary system :



BIOLOGY-X Work Sheet-3 (chapter # 11 page#26-29)

Instructions: Read the page #26-29 and then try to answer the following.

Multiple choice questions:

i) During summer which function usually kidney has to do?

a) Less filtration b) increased reabsorption c) a & b d) less reabsorption

ii) Excess uric acid in blood can cause-----

a) Kidney failure b) kidney stone c) heart failure d) hypertension

iii) Pain in lower abdomen, vomiting, frequent urination and foul smelling urine with blood and pus are symptoms of-----

a) Kidney failure b) kidney stone c) diabetes d) hypertension

iv) -----invented the surgical removal of stone from urinary bladder.

a) Abu al Qasim al zahrawi b) abu nasr al farabi c) ibn al Haytham d) ali ibn issa

v) Diabetes mellitus, hypertension and drug overdose can lead to -----

a) Angina b) kidney failure c) diarrhoea d) constipation

vi) ----- type of dialysis that can be done at home but must be done every day.

ST. MARY'S ACADEMY

CLASS 10 MATRIC

- a) Peritoneal dialysis b) hemodialysis c) a & b
viii) -----problem can happen with kidney transplant.
a) Rejection reaction b) infection & bone problem c) ulcers d) all

Short answers:

- i) How kidney stone form. Also give its causes, symptoms and treatment.-----

- ii) Write a note on kidney failure-----

- iii) Define : dialyzer -----

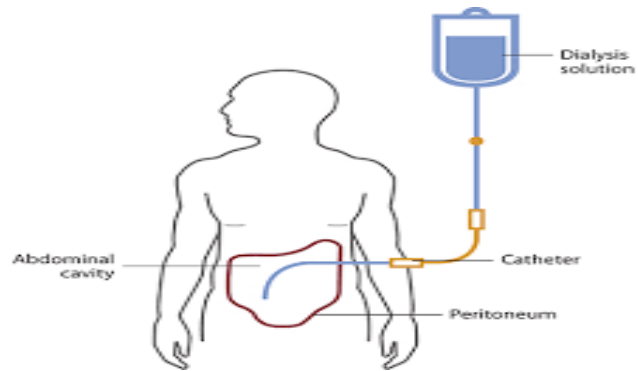
Glomerular filtrate-----

Succulent organs-----

- iv) Why kidney transplantation considered as a sensitive issue-----

v)With the help of figure shown below differentiate hemodialysis and peritoneal dialysis.

CLASS 10 MATRIC

[illegible]

- Chemical coordination is present in -----
a) Unicellular b) multicellular c) a&b d) colonial organization only
- A coordinated action has----- components.
a) 3 b) 5 c) 1 d) 4
- A nerve impulse is -----
a) Electromagnetic wave b) electrochemical wave c) magnetic wave d) a&b
- Nucleus and most of the cytoplasm is present in -----
a) Dendrites b) axon c) cell body d) neuroglial cell
- Non myelinated neuron lack-----
a) Dendrites b) axon c) myelin sheath d) all

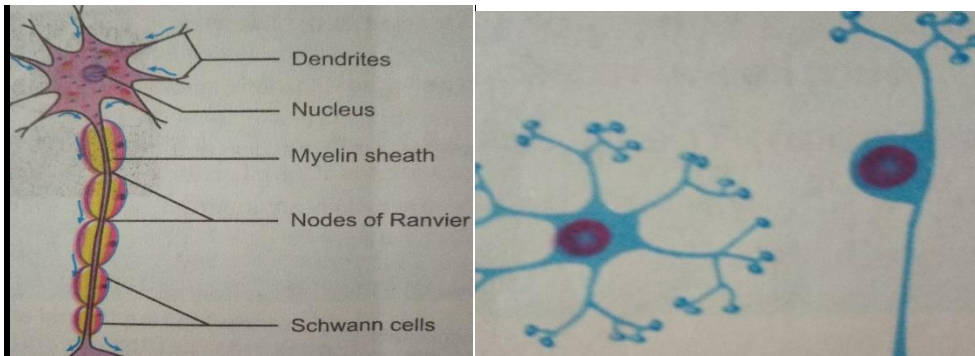
ST. MARY'S ACADEMY

CLASS 10 MATRIC

Short answers:

- i) Differentiate :a) nervous coordination-----&
Chemical coordination-----
- b) Receptor-----&
Effector-----.

- ii) Name and define three type nerve cell shown in the figure below:



-----.

- iii) Define : sensory nerve-----

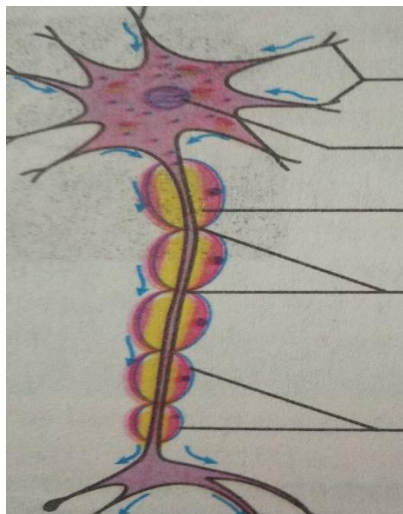
motor nerve-----

& mixed nerve-----

- iv) Identify the type of neuron or nerve cell shown in the figure below and describe its structure. Also label its different structure.
Name -----
structure-----

ST. MARY'S ACADEMY

CLASS 10 MATRIC



BIOLOGY-X Work Sheet-2 (chapter # 12 page#37-41)

Instructions: Read the page #37-41 and then try to answer the following.

Multiple choice questions:

- i) Brain is made of -----neurons which have many dendrites and axon.
a) Sensory b) motor c) interneuron d) all
- ii) Fluid within ventricle and central canal is -----
a) CSF b) plasma c) water d) CSL
- iii) If a person can remember previous event but cannot remember new one as memory, then its -----
-----part is damaged.
a) Cerebrum b) hippocampus c) medulla oblongata d) all
- iv) Growth hormone releasing factor which control the release of growth hormone from pituitary gland is released from -----
a) Cerebrum b) cerebellum c) pons d) hypothalamus
- v) The white matter of nervous system consist -----
a) Non-myelinated axon b) myelinated axon c) myelinated axon & cell body d) all
- vi) Fight and flight response are controlled by ----- nervous system.
a) Sympathetic b) para sympathetic c) somatic d) all

Short answers:

- i) Give function of : thalamus-----&
Hypothalamus-----

ST. MARY'S ACADEMY

CLASS 10 MATRIC

ii) Differentiate between white and grey matter of brain and spinal cord-----

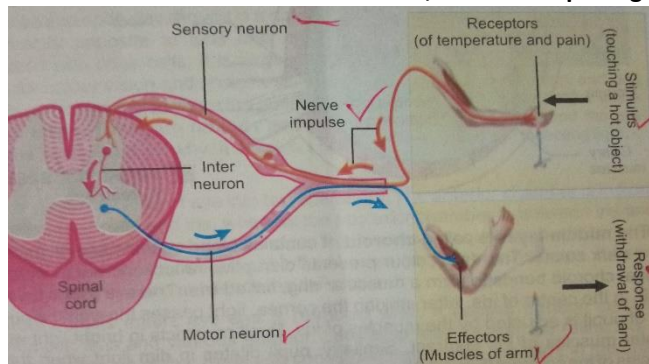
iii) Name and give function of lobes of cerebrum-----

iv) Differentiate sympathetic and parasympathetic nervous system-----

v) Give function of a) pons-----

b)mid brain-----

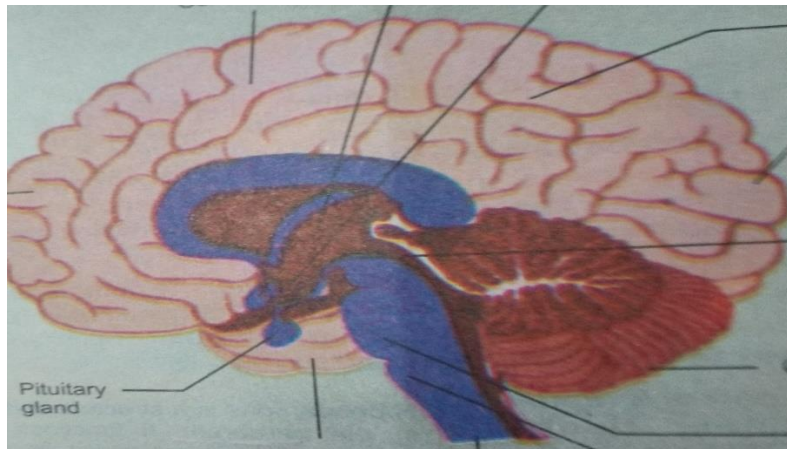
vi) Define and differentiate reflex action and reflex arc ,with the help of figure shown below:



vii) label the different parts of brain in figure shown below and give function:

ST. MARY'S ACADEMY

CLASS 10 MATRIC



BIOLOGY-X Work Sheet-3 (chapter # 12 page#41-45)

Instructions: Read the page #41-45 and then try to answer the following.

Multiple choice questions:

- i) There are about -----million rods in human eye.
a) 11.5 b) 12.5 c) 10.5 d) 13.5
- ii) -----dip in the retina opposite to lens, packed with cone cells.
a) Blind spot b) optic disc c) fovea d) all
- iii) The pathway followed by nerve impulse for reflex action called-----
a) Dorsal route b) ventral route c) reflex arc d) reflex action.
- iv) There are no rods and cone -----
a) Blind spot b) optic disc c) fovea d) all
- v) A person with convex lens in his glasses can see clearly-----
a) Near objects b) distant objects c) a&b d) all

Short answers:

ST. MARY'S ACADEMY

CLASS 10 MATRIC

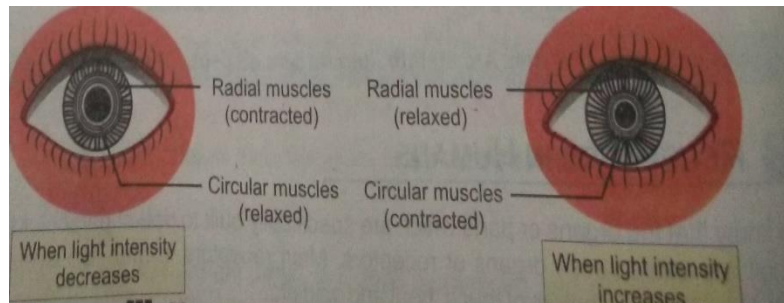
i) Define: a) sclera -----

b) cornea -----

c) iris -----

d) pupil -----

ii) Describe how size of pupil is changed in a) dim light and b) bright light.



iii) differentiate :a) aqueous and vitreous humour-----

b) rhodopsin and iodopsin-----

iv) write a note on hypermetropia-----

v) Name and describe function of different parts of human eye.

CLASS 10 MATRIC



Instructions: Read the page #45-47 and then try to answer the following.

i) Auditory canal ends in -----

ST. MARY'S ACADEMY

CLASS 10 MATRIC

- a) Pinna b) cochlea c) ear drum d) stapes
- ii) Apart from hearing what other major body function is performed by the ear?
- a) Hormone secretion b) reduction in nerve pressure c) Body balance d) all of these
- iii) -----made several improvement to the eye surgery.
- a) Bu ali sina b) umar al jahiz c) ibn al Haytham d) ali ibn Isa
- iv) -----is present in the center of inner ear.
- a) Oval window b) vestibule c) malleus d) cochlea
- v) -----regulate the air pressure on either side of the ear drum.
- a) Oval window b) Eustachian tube c) malleus d) cochlea

Short answers:

- i) Define : a) pinna -----

b) Ear drum-----
-----&
c) Oval window-----

- ii) How ear help in maintaining the balance of the body. -----

- iii) Trace out the process of hearing. -----

- iii) How nerve impulse generated inside the ear. -----

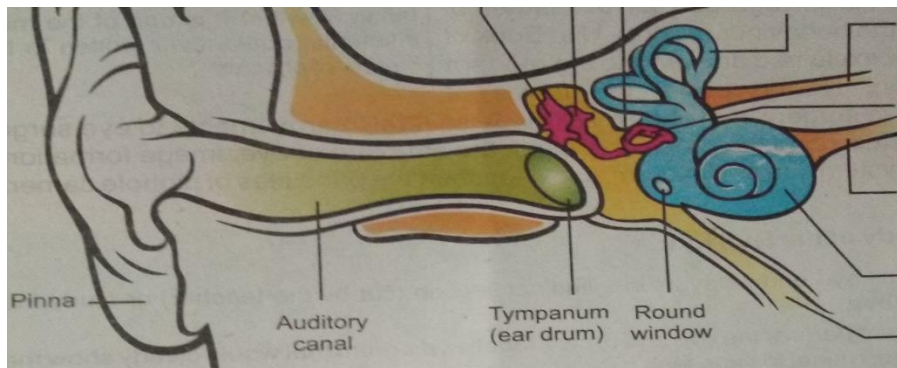
- iv) Identify the structure of inner ear and give function, also label its parts.

ST. MARY'S ACADEMY

CLASS 10 MATRIC



- v) Figure below show the human ear. Label its unlabeled parts and give their function.



ST. MARY'S ACADEMY

CLASS 10 MATRIC

BIOLOGY-X Work Sheet-5 (chapter # 12 page#47-52)

Instructions: Read the page #47-52 and then try to answer the following.

Multiple choice questions:

- i) Insulin and glucagon are produced in the-----
a) Hypothalamus b) Anterior pituitary c) liver d) Pancreas
- ii) All of these are hormones except-----
a) Insulin b) Thyroxin c) Glucagon d) Pepsinogen
- iii) Other name of vasopressin is -----
a) Antidiuretic hormone b) growth hormone c) Antinatrium hormone d) all
- iv) Increased heartbeat ,shivering ,frequent sweating ,more energy production are due to-----
a) Hypothyroidism b) hyperthyroidism c) goiter d) all
- v) Anticonvulsant drugs are used in -----
a) Cancer b) epilepsy c) paralysis d) all of these

Short answers:

- i) Define : a) exocrine gland-----

b)endocrine gland-----

- ii) give location and function of :a) pituitary gland-----

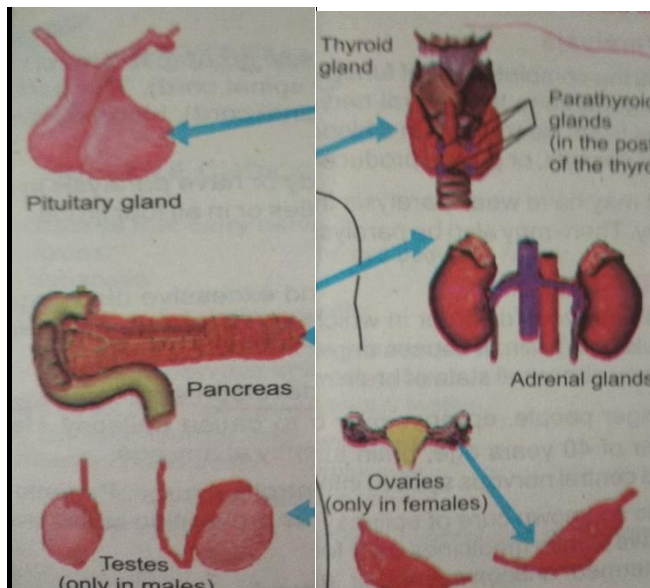
b)thyroid gland-----

- .iii) Differentiate: a) negative feedback-----

----- and
positive feed back -----

CLASS 10 MATRIC

- v) Enlist functional and vascular disorders of the nervous system.
- vi) Endocrine glands in human body shown in the figure below. Give their role they play in life processes.



ST. MARY'S ACADEMY

CLASS 10 MATRIC

BIOLOGY-X Work Sheet-5 (chapter # 12 page#57-60)

Instructions: Read the page #57-60 and then try to answer the following.

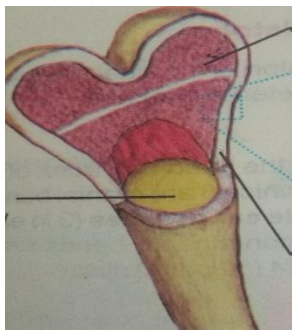
Multiple choice questions

- i) -----is the function of the skeleton.
a) Support b) movement c) protection d)all
- ii) Intervertebral disc made up of -----
a) Hyaline cartilage b) fibrous cartilage c) elastic cartilage d) a&b
- iii) -----is the hardest connective tissue.
a) Cartilage b) bone c) muscles d) blood
- iv) Adult skeleton has ----- hard bones.
a) 203 b) 206 c)209 d)212
- v) Blood vessel do not enter -----
a) Compact bone b) spongy bone c) cartilage d) all

Short answers:

- i) Differentiate a) movement -----&
Locomotion-----&
b) Hyaline cartilage -----&
Fibrous cartilage -----

- ii) Label and define the types of bone shown in the figure:



- iii) Describe human skeleton under the following headings:

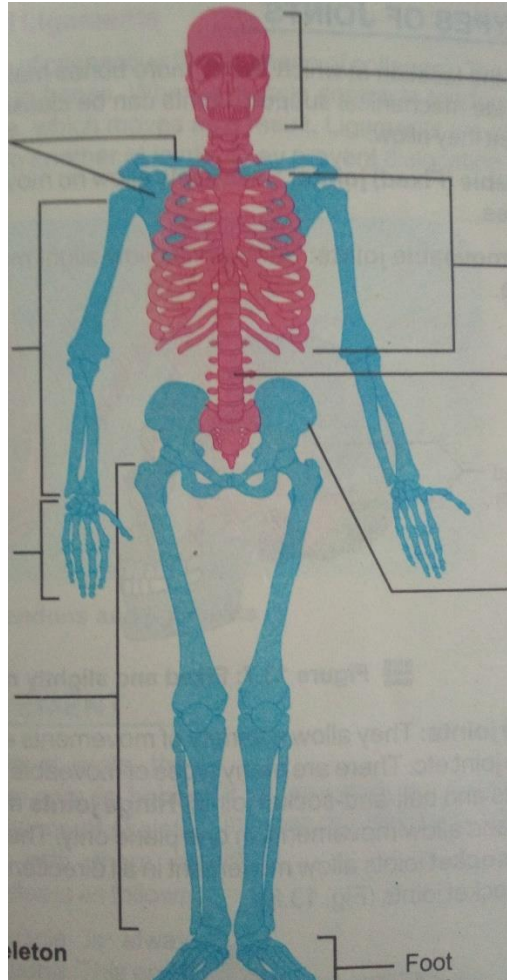
- a) Appendicular skeleton-----

ST. MARY'S ACADEMY

CLASS 10 MATRIC

b) Axial skeleton-----

c) Label the component of human skeleton shown in figure below you have describe in (a) and (b).



BIOLOGY-X Work Sheet-5 (chapter # 12 page#62-65)

Instructions: Read the page #62-65 and then try to answer the following.

Multiple choice questions

- i) Toe joint is example of -----
a) Hinge joint b) ball and socket joint c) immoveable joint d) all
- ii) Shoulder joint is example -----
b) a) Hinge joint b) ball and socket joint c) immoveable joint d) all
- iii) The band of connective tissue attach muscle to bone is called -----
a) Tendon b) ligament c) origin d) insertion

CLASS 10 MATRIC

- ### Short answers:

-

Flexion

ST. MARY'S ACADEMY

CLASS 10 MATRIC

CLASS 10M

PHYSICS

ST. MARY'S ACADEMY

CLASS 10 MATRIC

Name: _____

Section: _____

Subject: *Physics*

Worksheet # 1

Work sheet no 1 Chapter no: 10

S.H.M and Waves

Learn and rewrite the formulas

1. Time period of mass attached to a spring, $T = 2\pi \sqrt{m/k}$
2. Time period of simple pendulum, $T = 2\pi \sqrt{l/g}$.
3. Relation between time period and frequency. $T = 1/f$ or $f = 1/T$
4. Velocity of a wave $v = f\lambda$ or $v = d/t$

Do the following numerical problems. 10.1 to 10.5 using the above formulas.

Work sheet no 2

Using the above formulas do the numerical problems. 10.6 to 10.10

Work sheet no 3

Do the MCQs of chapter no10 and learn

Fill in the blanks (MCQs are solved in the form of fill in the blanks.)

1. _____ is an example of SHM (The motion of simple pendulum).
2. If the mass of the bob of a pendulum is increased by a factor of 3 ,the period of the simple Pendulum's motion will _____ (remain the same).
3. Which device can be used to produce both transverse and longitudinal waves. (a helical spring or slinky).
4. Waves transfer _____ (energy).
5. _____ is a method of energy transfer (conduction, radiation, wave motion, or All of these).
6. In a vacuum, all electromagnetic waves have the same _____.(speed)
7. A large ripple tank with a vibrator working at a frequency of 30 Hz produces 25 complete waves in a distance of 50 cm. The velocity of the waves is _____(1500cm/s)
8. _____ is the characteristic of wave that is independent of the others (amplitude)
- 9 The relation between v, f and λ of a wave is _____ ($v = f\lambda$)

ST. MARY'S ACADEMY

CLASS 10 MATRIC

Work sheet no 4

Learn the answer of the following questions. Rewrite the answers.

QUICK QUIZ (pg-8): Q: Do mechanical waves pass through vacuum? Explain.

Ans : No, mechanical waves cannot travel through vacuum or space because they need medium for propagation. For example, the sound of the explosions taking place on the Sun cannot be heard on Earth.

FOR YOUR INFORMATION (pg-9) Q: Compare the speed of longitudinal and transverse waves.

Ans : Speed of longitudinal wave is more than the speed of transverse waves. Speed of transverse waves in solids is less than half the speed of longitudinal waves.

QUICK QUIZ (pg-13) Q : What do the dark and bright fringes on the screen of ripple tank represent?

Ans : Dark fringes represents trough, destructive interference and behave like concave lens.

Bright fringe represents crest, constructive interference and behave like convex lens.

ACTIVITY (pg-14) Q: What happens to the direction of the waves pass from deep to shallow part of the water?

Ans :

1) It changes its direction and speed.

Q 2 : Are the magnitude of the angle of incidence and angle of reflection equal?

Ans : No, magnitude of angle i does not equal to angle r .

Q 3 : Which will be greater?

Ans : Angle is more than in deep water and less in shallow that is angle incidence is more than angle r .

ST. MARY'S ACADEMY

CLASS 10 MATRIC

Work sheet no 5

CONCEPTUAL QUESTIONS (page no 17)

Learn and rewrite the answers:

(C no 10.1) If the length.....

$$\text{ANS) } L = 2l$$

$$T = 2\pi (\sqrt{l/g})$$

Putting $l = 2l$

$$T' = 2\pi (\sqrt{2l/g})$$

$$T' = \sqrt{2} \cdot 2\pi (\sqrt{l/g})$$

$$T' = \sqrt{2} T$$

OR

$$T' = 1.4T$$

(C.no 10.2) A ball is.....

ANS) No, when a ball is dropped from a certain height it does not have S.H.M, as it does not satisfy the properties of S.H.M, constant force of gravity acts on it a is not directly proportional to x.

(C. no 10.3) A student performed-----

ANS) As the time period of simple pendulum is $(T = 2\pi \sqrt{l/g})$

$T \propto \sqrt{L}$. It does not depend on mass so there is no affect on time period by using bobs of different masses.

(C . no 10.4) What types of waves-----

ANS) electromagnetic waves are the waves which do not require medium for their proportion. e.g (radio, micro, ultra violet, x rays etc.)

(C.no 10.5) Speed of a wave is.....

ANS) $V = f\lambda$. f is constant

$V \propto \lambda$ Wavelength is more in deep water and less in shallow water so does the speed. Speed of a wave is more in deep water as compare to shallow or less deep water.

ST. MARY'S ACADEMY

CLASS 10 MATRIC

Work sheet no 6

Learn the topics : Waves and its types

Answer the following questions.

- 1 Define wave motion.
- 2 Write down the different categories of waves.
- 3 What are the different types of mechanical waves?

Work sheet no 7

Learn the topic : Damped oscillation and ripple tank

Answer the following question

- 1 How damping progressively reduces the amplitude of oscillation?
2. Explain the structure of the ripple tank.
3. What is a vibrator? What is the function of ripple tank?

Work sheet no 8

Learn the formulas of chapter no 11

- 1 Intensity of sound level $\text{dB} = 10 \log I / I_0$ (value of $I_0 = 10^{-12} \text{ w/m}^2$)
2. Speed of a sound $d = v \cdot t$ or $v = d/t$
3. Speed of sound by reflection or echo method $= 2d/v \cdot t$ or $v = 2d /t$

Using the above formula solve the numerical problems of chapter no 11

ST. MARY'S ACADEMY

CLASS 10 MATRIC

CLASS 10M COMPUTER

ST. MARY'S ACADEMY

CLASS 10 MATRIC

Name: _____ Section: _____

Subject: Computer

Week -1

Q: Encircle the correct option.

i. which of the following structures repeats one or more operations?

A . Sequence b. Selection c. Loop d. Decision

ii. Which symbol is used for processing in a flowchart?

A . Rectangle b. parallelogram c. Diamond d. oval

iii. ----- is a step by step written procedure to solve a problem.

A . Flowchart b. Candid solution c. Analysis d. Algorithm

iv. Which structure allows a choice among various options while solving a problem.

A . Repetition b. Selection c. Sequence d. Decision

v. Which symbol is used for start/stop of a flowchart.

A . oval b. rectangle c. circle d. line

Q: Write short answers of the following questions.

I . Define Computer.

Ans: -----

-----.

ST. MARY'S ACADEMY

CLASS 10 MATRIC

ii . What is defining the problem?

Ans: -----

-----.

iii. what is candid solution of a problem?

Ans: -----

-----.

iv. Define Algorithm.

Ans: -----

-----.

v. Define flow chart and write its importance.

Ans: -----

-----.

ST. MARY'S ACADEMY

CLASS 10 MATRIC

vi. Write the steps for drawing a flow chart.

Ans: -----

-----.

vii. How we select the best solution?

Ans: -----

-----.

viii. Differentiate between sequential structure and Repetition structure.

Ans: -----

-----.

ST. MARY'S ACADEMY

CLASS 10 MATRIC

Extensive Questions

Q: Describe the steps involved in problem solving.

Q: Write a detail note on different flow chart symbols.

Week -2

Q: Encircle the correct option.

I . What is represented by a small circle in a flowchart?

A .start/strop b. Decision c. processing d. connector

ii. ----- of a problem are all the possible solutions for a problem

ii. Algorithm b. Candid c. Flowchart d. Planning

iii. Defining the problem is the ----- stage of problem solving.

A . first b. second c. third d. fourth

iv. Which symbol is used for input/output in a flowchart.

A . oval b. parallelogram c. Rectangle d. circle

v. IN which stage, programmer investigates the problem.

A . Defining b. planning c. Analysing d. algorithm

Q: Write short answers of the following questions.

I . What is the role of algorithm in problem solving?

Ans: -----

-----.

ST. MARY'S ACADEMY

CLASS 10 MATRIC

ii. How we measure the efficiency of an algorithm?

Ans: -----

-----.

iii. What are the advantages of using flowchart?

Ans: -----

-----.

Note: in this week, Students will write different algorithms. One algorithm is written below as a sample for student.

Q: write planning and algorithm to find the sum and product of three numbers.

Planning:

input 3 numbers

Output required: sum and product and 3 numbers

Processing: Addition and multiplication of numbers

Algorithm:

Step 1. Start

Let the three numbers $a=2$, $b=5$, $c=10$

ST. MARY'S ACADEMY

CLASS 10 MATRIC

Step 2. Find the Sum

$$\text{Sum} = a + b + c$$

Step 3. Find the product.

$$\text{Prod} = a * b * c$$

Step 4. Output sum, prod

Step 5 . stop

Q: Write planning and algorithm to find the largest of three unequal numbers.

Q: Write the planning and algorithm to print a multiplication table of a given number.

Q: -Write the planning and algorithm to find the area of Rectangle for given breadth and length.

Q; Write the planning and algorithm to find the average of 5 numbers.

Q: Write the planning and algorithm to print odd numbers from 1 to 100.

ST. MARY'S ACADEMY

CLASS 10 MATRIC

ST. MARY'S ACADEMY